

NC STATE UNIVERSITY
College of Education
Friday Institute for Educational Innovation

Let's Talk: Supporting Classroom Discourse and Argumentation while Investigating Data



Emily Thrasher, Gemma F. Mojica, Bruce Graham, Adrian Kuhlman
October 27, 2023



**Invigorating Statistics and Data Science
Teaching through Professional Learning**

NC State University Project Leads:

Hollylynne Lee (PI)
Gemma Mojica (Co-PI)
Emily Thrasher (Project Manager/Senior
Researcher)

NC State University Project Team:

Bruce Graham, Michelle Pace (GRAs)
Adrian Kuhlman, Zack Vaskalis, Greg Ray
(former GRAs)

Matty Grossman (URA)

RTI International Project Team:

Patrick Brown, Andrzej Proczka, Britta
Hansen



Materials used in this presentation were funded by the National Science Foundation under Grant No. DRL 1908760 awarded to NC State University. Any opinions, findings, and conclusions or recommendations expressed herein are those of the presenters and do not necessarily reflect the views of the NSF or RTI.

NC STATE

Friday Institute for Educational Innovation

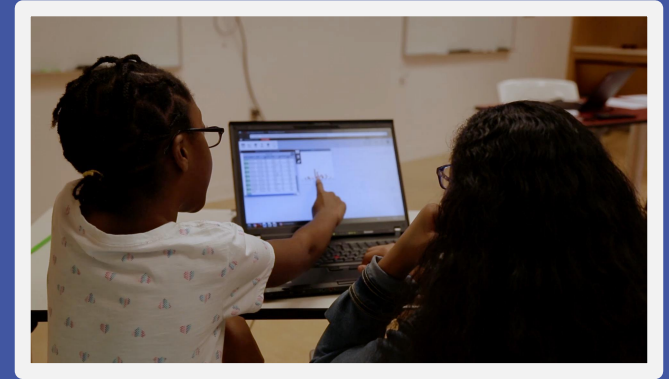
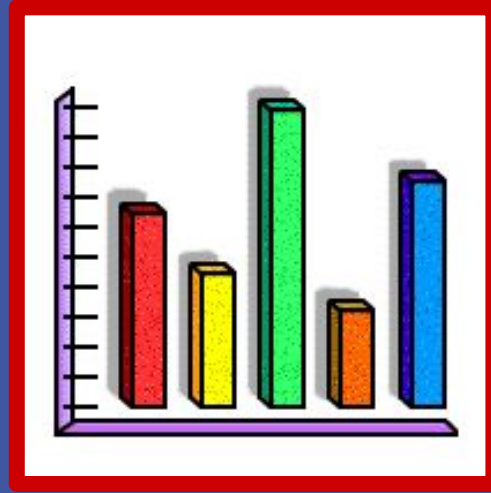
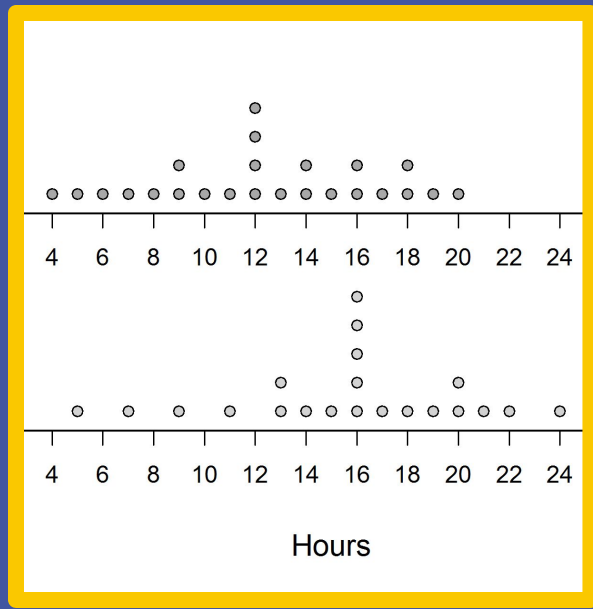


fi.ncsu.edu



Access links we will use today

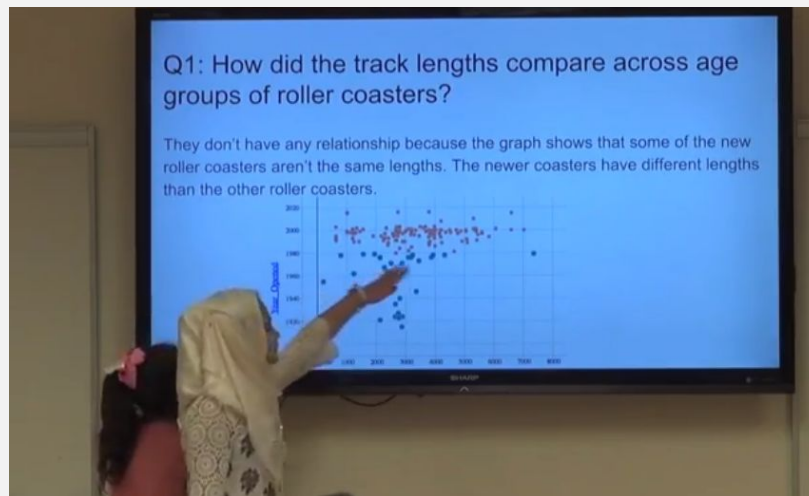
<http://bit.ly/2023NCTM>



What are the typical experiences students have in learning statistics in school?

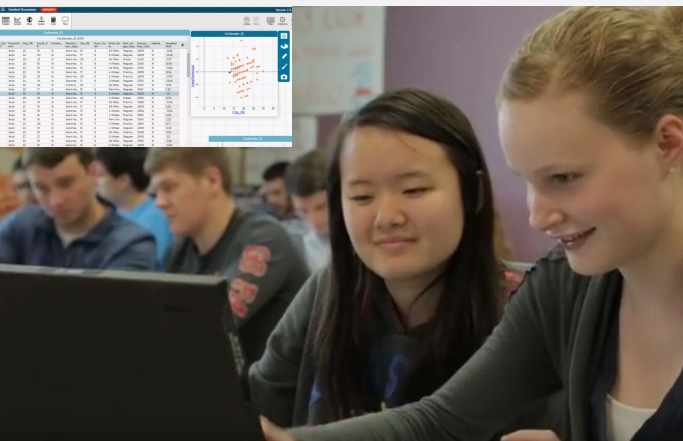
Large and Messy
(Kochevar)

Awash in Data
(Finzer & Erickson)



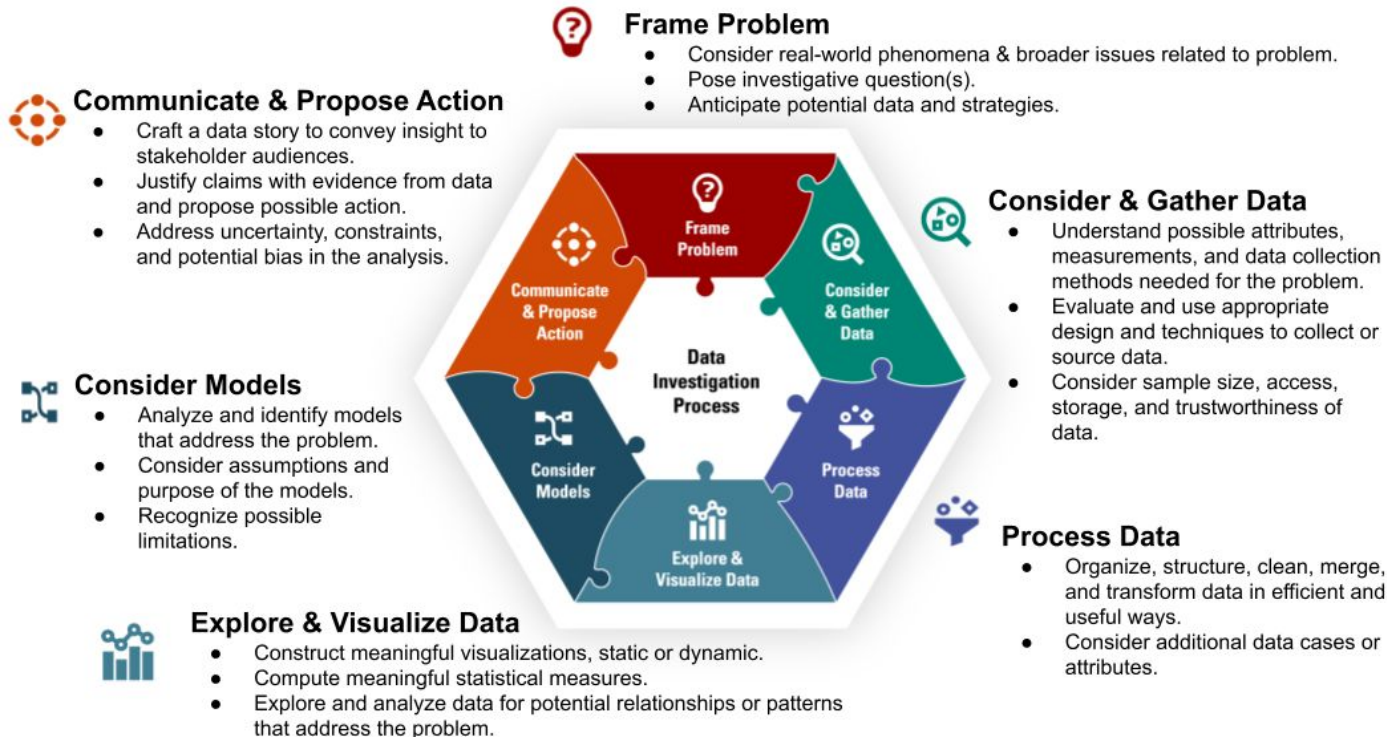
**Requires
use of
Technology**

Complex Data



**Real
Contexts**





Key Considerations & Dispositions

Make sense of data with respect to context

Take advantage of technology

Attend to variability & uncertainty

Seek expertise & information

Communicate & collaborate

Be curious creative, & intuitive

Persist & be resilient

Consider ethical issues & biases

Be a skeptic



Discourse and Data Visualizations

Making sense of visualizations in your classroom

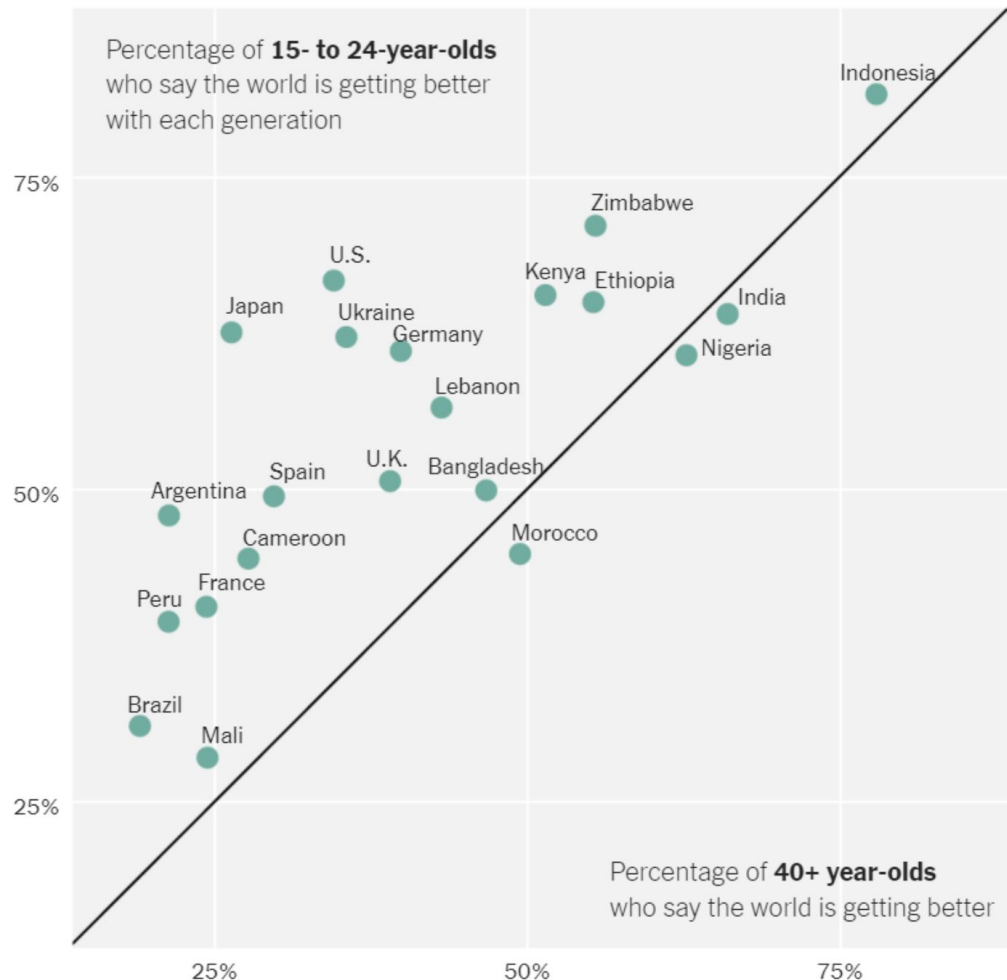
Take a look at this graph
from the New York
Times

What do you notice?

What do you wonder?

The New York Times

<https://www.nytimes.com/2022/02/03/learning/whats-going-on-in-this-graph-feb-9-2022.html>



Source: UNICEF-Gallup survey of more than 21,000 people conducted by telephone in 21 countries between February and June 2021.

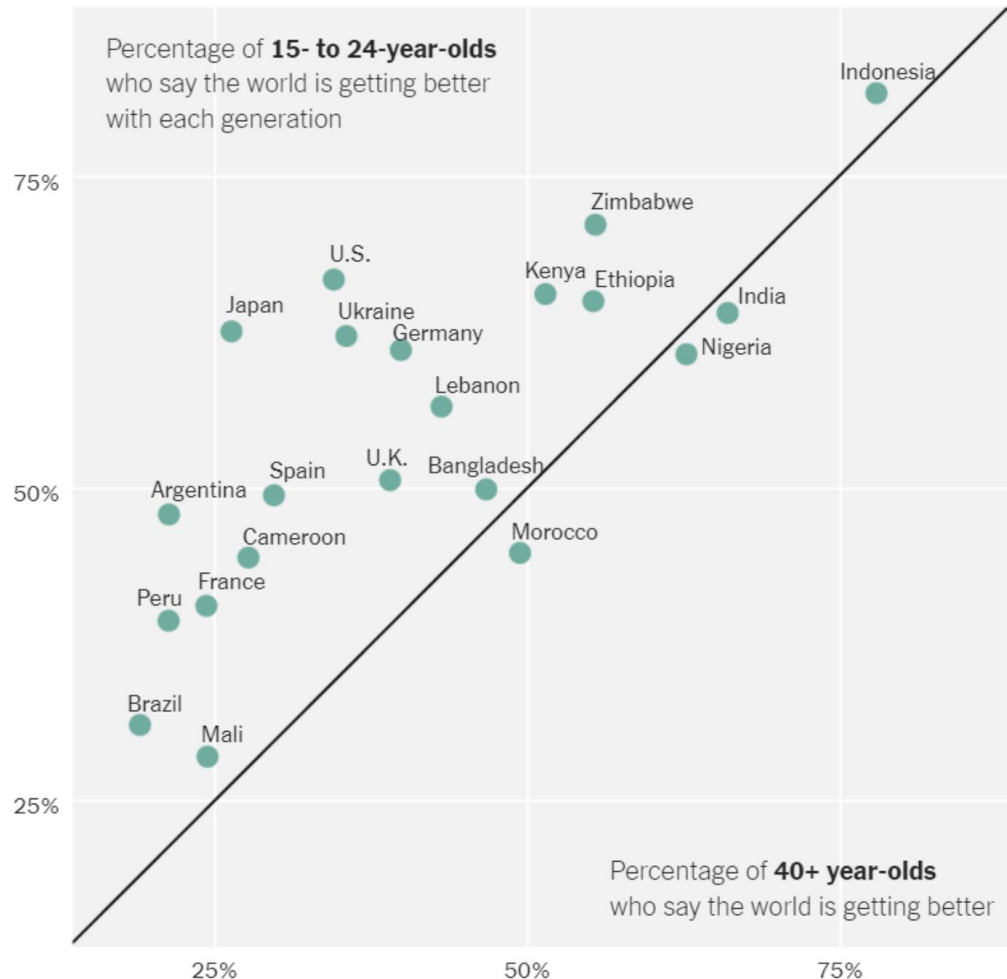
Do you think the world is becoming a better or worse place with each generation?

21,000 people were surveyed by telephone in 21 different countries

Survey took place from February to June 2021

The New York Times

<https://www.nytimes.com/2022/02/03/learning/whats-going-on-in-this-graph-feb-9-2022.html>



Source: UNICEF-Gallup survey of more than 21,000 people conducted by telephone in 21 countries between February and June 2021.

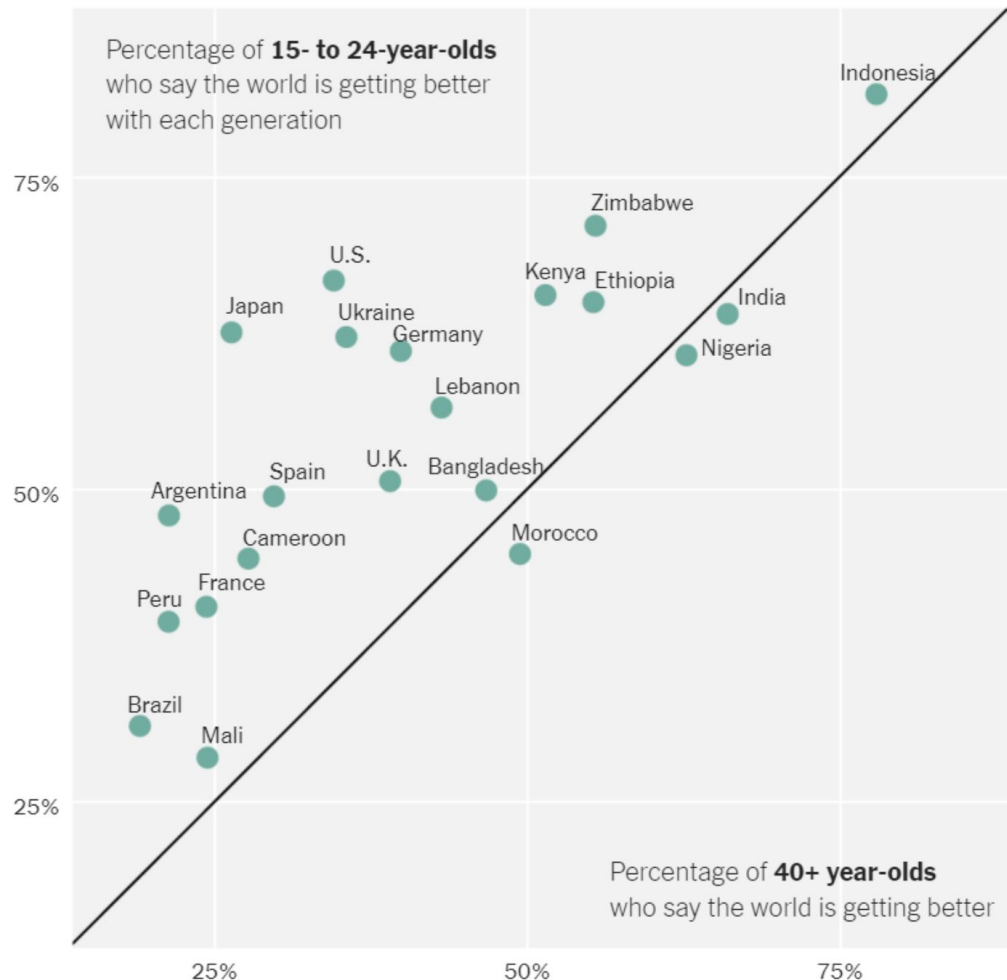
Breaking down the graph

What does it mean for a country to be above the drawn line? Below the drawn line?

How would you describe responses to the survey from U.S. participants?

The New York Times

<https://www.nytimes.com/2022/02/03/learning/whats-going-on-in-this-graph-feb-9-2022.html>

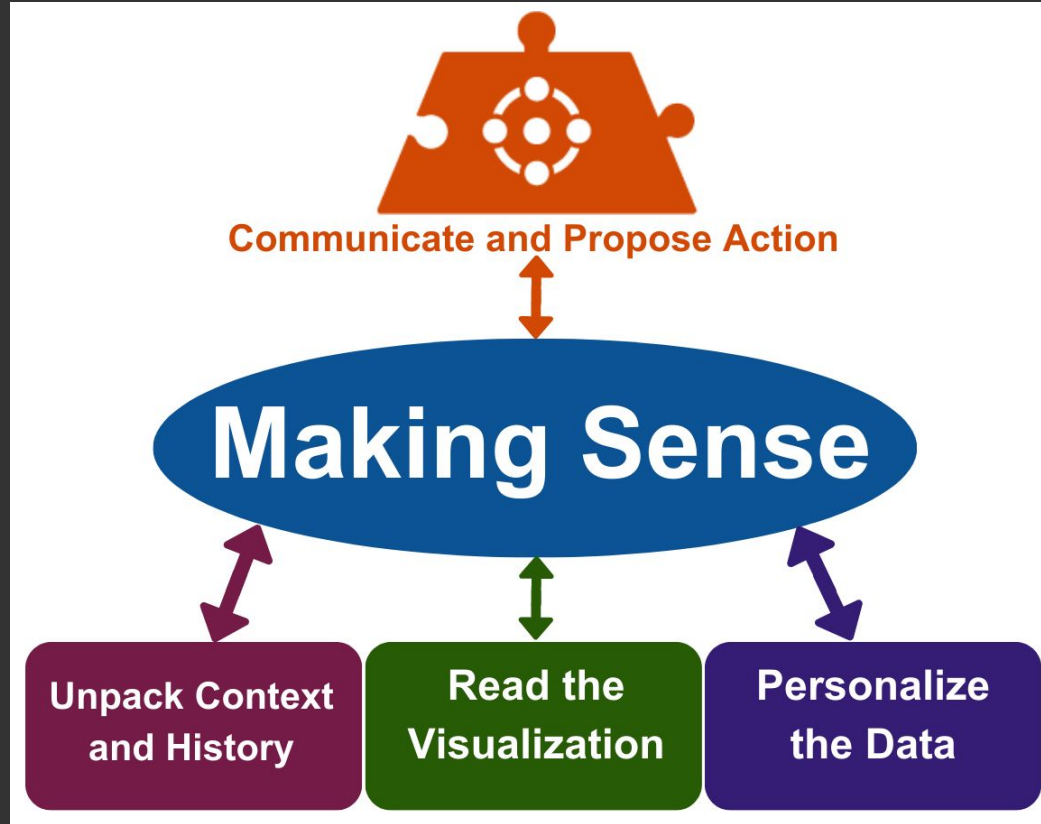


Source: UNICEF-Gallup survey of more than 21,000 people conducted by telephone in 21 countries between February and June 2021.

Resources for Visualizations

- [New York Times “What’s Going on in this Graph”](#)
- [Turner’s Graph](#)
- [Data Talks for K-12 classes](#)
- [Statista collection of Infographics](#)

Data Visualizations

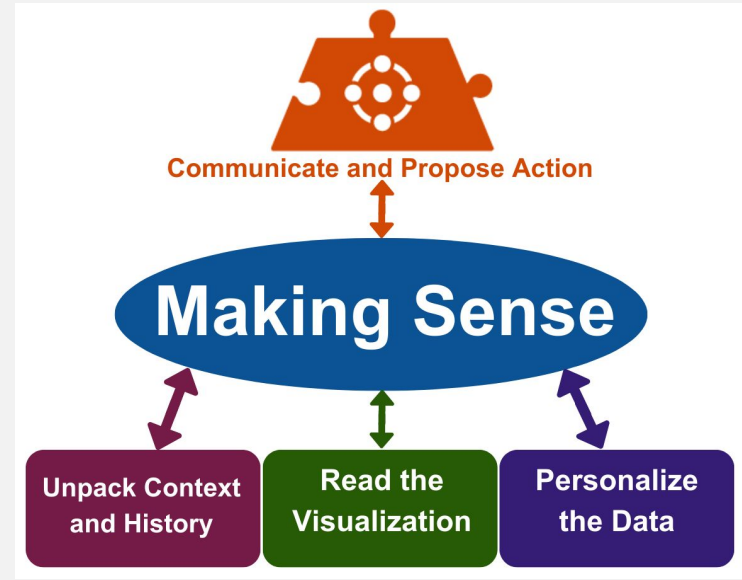


<https://bit.ly/MakingSenseofDataVisualizations>

Making Sense of Data Visualization

With your shoulder buddy, review the discourse prompts and reflect on this framework:

- Do parts of this framework surprise you?
- Are there parts of this framework you already do well with students?
- What are the challenges to using data visualization in the classroom?



Discourse and Data Investigations



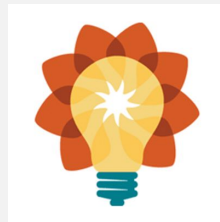
Examine Data in Our Favorite Data Tool: CODAP

Free

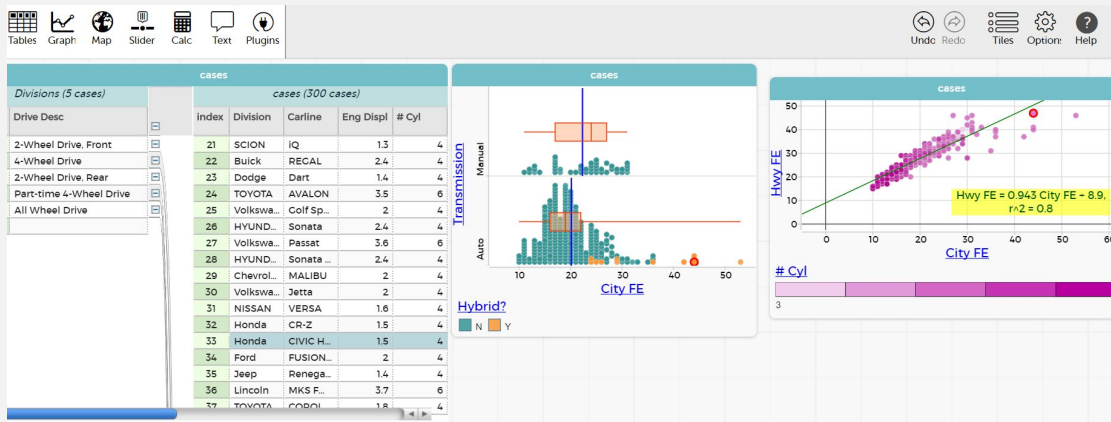
No login required

Easy to use

Under continual development



codap.concord.org



Let's Reimagine!

Emily & Adrian 2/5

Keely 9/12

Bruce 5/10

Hollylynne & Sammy & Sam 12/6

Maureen 7/7

Bocephus 9/26

Gemma 1/12

What is we asked...

- What is the probability that at least 2 people in a room share the same birthday?
- Is every birthday just as likely as any other birthday?
- In the US, are there about the same number of births recorded on every day throughout the year?
- Are birthdays uniformly distributed throughout the year?

And we obtained data

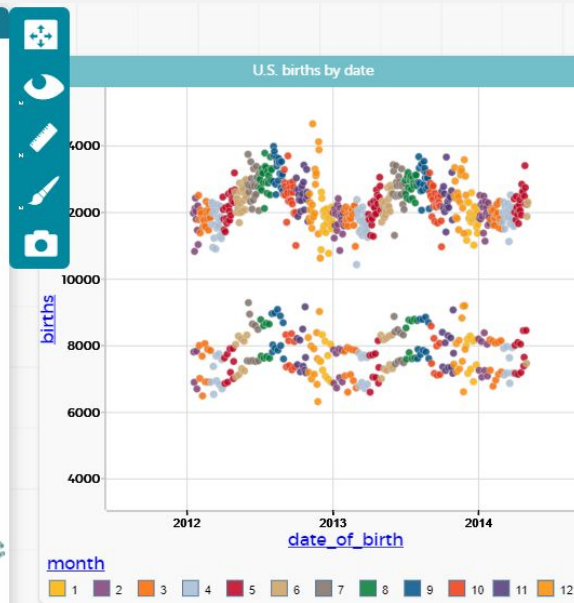
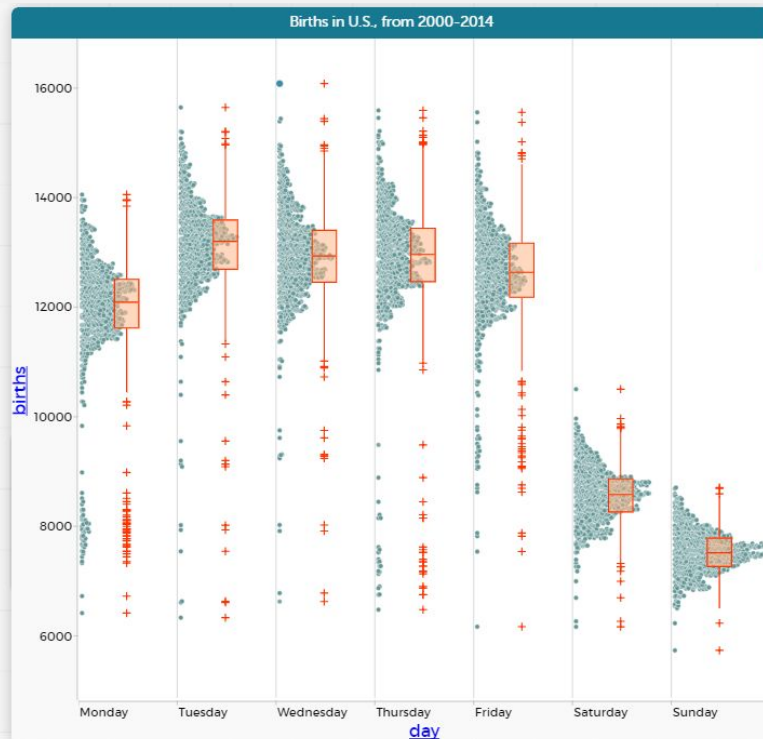
Number of live births recorded in
U.S. every day from 2000-2014.

<https://bit.ly/Births>



<https://bit.ly/Births>

Number of U.S. Daily Births: 2000-2014							
U.S. births by date (5479 cases)							
index	month	date_of_month	day_of_week	day	date_of_birth	births	
250	9	7	1	Monday	9/7/2009	7947	
251	9	8	2	Tuesday	9/8/2009	13555	
252	9	9	3	Wednesday	9/9/2009	16081	
253	9	10	4	Thursday	9/10/2009	14887	
254	9	11	5	Friday	9/11/2009	13032	
255	9	12	6	Saturday	9/12/2009	9264	
256	9	13	7	Sunday	9/13/2009	7871	
257	9	14	1	Monday	9/14/2009	13393	
258	9	15	2	Tuesday	9/15/2009	14558	
259	9	16	3	Wednesday	9/16/2009	14130	
260	9	17	4	Thursday	9/17/2009	14095	
261	9	18	5	Friday	9/18/2009	13951	
262	9	19	6	Saturday	9/19/2009	9032	
263	9	20	7	Sunday	9/20/2009	8014	
264	9	21	1	Monday	9/21/2009	13415	
265	9	22	2	Tuesday	9/22/2009	14318	
266	9	23	3	Wednesday	9/23/2009	13973	
267	9	24	4	Thursday	9/24/2009	14048	
268	9	25	5	Friday	9/25/2009	13449	
269	9	26	6	Saturday	9/26/2009	9013	



Additional Classroom Ready Data Sets!

- [Rollercoaster Data Set](#)
- [North Carolina Discipline Data](#)
- [Cereal Data Set](#)
- [US Census at School - Random Sample of 500 Cases](#)

InSTEP

Develop teacher expertise in K-12 statistics and data science teaching through free, personalized professional learning.

Notify me when InSTEP is available →



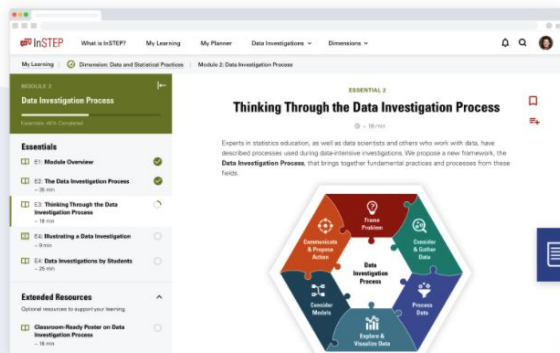
Online learning opportunities for teachers



instepwithdata.org

InSTEP

Invigorating Statistics and Data Science Teaching through Professional Learning





Questions



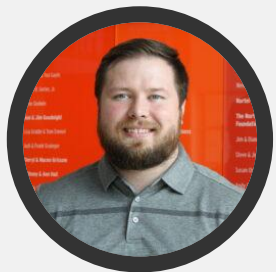
Stay Connected



Emily Thrasher, Ph.D.
Research Scholar
epthrash@ncsu.edu



Gemma F. Mojica, Ph.D
Senior Research Scholar
gmjojica@ncsu.edu



Bruce Graham
Graduate Research Assistant
bmgraha2@ncsu.edu



Adrian Kuhlman
Graduate Research Assistant
akuhlma@ncsu.edu



Join us for a Community Meet up!

Friday 5-7pm, Food and Drinks Provided
Calico , 50 Blagden Alley NW,
Washington, DC 20001

Use QR
code to
RSVP now!

1		0 0 0		1	1 1	0 1		0
	0 0		0		0		0 1 0	1
1		1 0			0 1	1 0		1 1 1
	1		0		1			0
1			0 0		1	1		1
0		0 0			0			0



Community Meetup Registration

NC STATE UNIVERSITY
College of Education
Friday Institute for Educational Innovation

fi.ncsu.edu